

METAL DOOR FRAMES

Contents

	Page Number
General Information	3
Assembled Frames	4
Knock Down Frames	5
Standard Door Frames For Dry Walls	6
Standard Non-Rated Door Frames	7
Sliding Door Frames	8
New Generation Frames	9-10
Fire Door Frames For Masonry	11
Fire Door Frames For Dry Wall	12-13
Frame Fixing Details	14-15

Information in this brochure is given to the best of our knowledge.

Joiman P/L is not responsible if the reader misinterprets the contents and wrongly uses products based on those interpretations. We reserve the right to change specifications without notice.

METAL DOOR FRAMES

Assembled And Knock Down Frames:

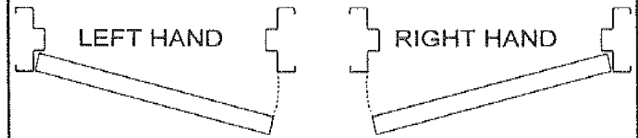
These frames are supplied with:

1. One pair of 100x 75 mm 1.6mm zinc plated loose pin butt hinges projection welded into position.
2. A universal stainless steel striker plate positioned at standard location.
3. One pair of rubber buffers fitted to the lock stile.
4. Removable spreader bars.
5. Ramset plates to each stile.
6. Ten galvanised wire ties.
7. Projection welded corners when supplied as factory assembled frames.

Available Extras:

1. Additional hinges.
2. Preparation for special lock strikers.
3. Preparation for non-standard lock height
4. Reinforced for surface mounted closers or preparation for concealed closers.
5. Preparation for screw fixed hinges.
6. Tube fixing for bolting of frames to existing walls.

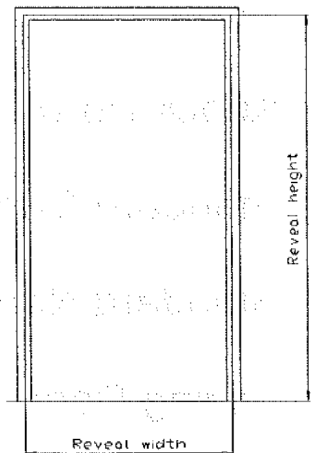
Handing



Standard Reveal Sizes

Standard heights:

2055 and 2065



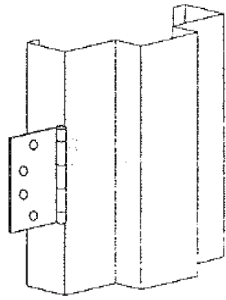
Standard Widths:

SINGLES	PAIRS	SLIDERS
624	1246	690
724	1446	740
774	1546	790
824	1646	
874		
924		

METAL DOOR FRAMES

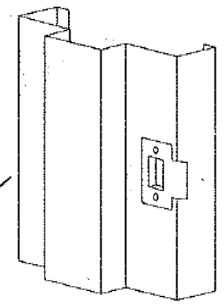
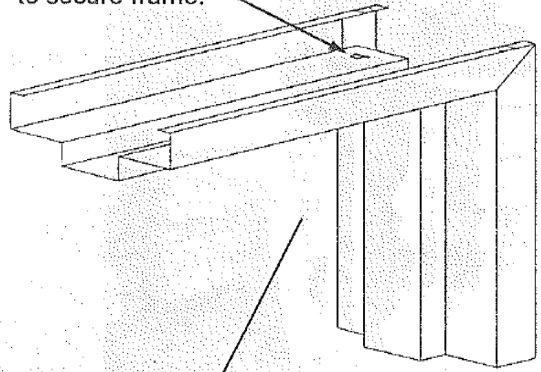
4

ASSEMBLED FRAMES

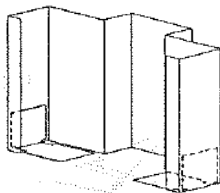


Projection welded loose pin zinc plated hinges.

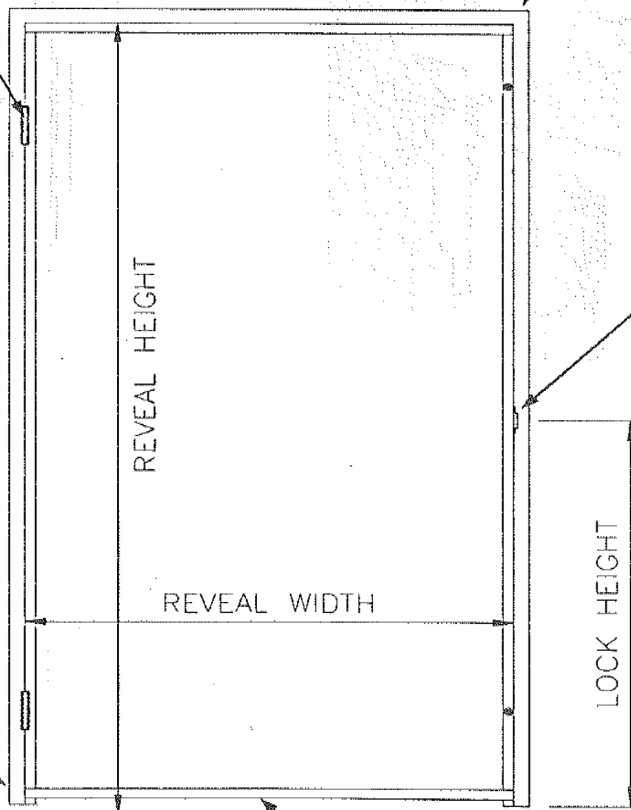
Lugs bent down to secure frame.



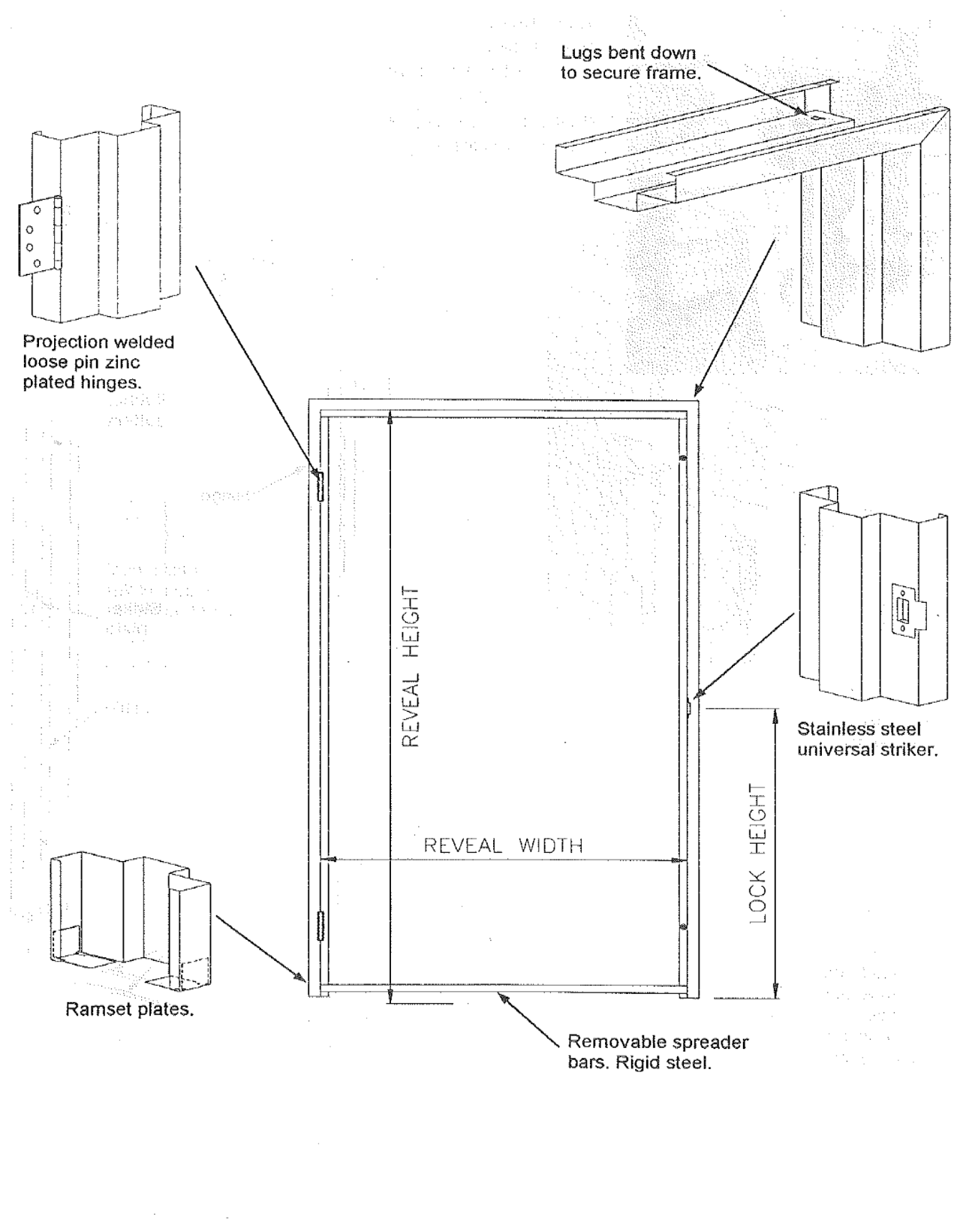
Stainless steel universal striker.



Ramset plates.



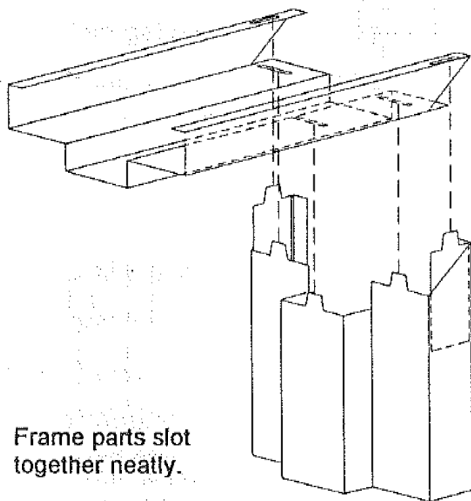
Removable spreader bars. Rigid steel.



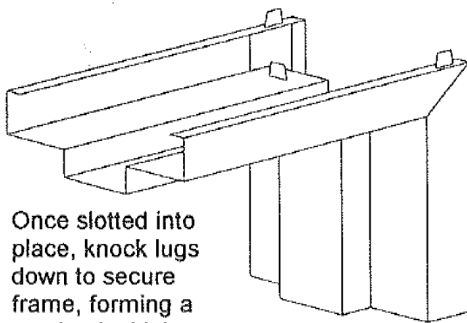
METAL DOOR FRAMES

KNOCK DOWN FRAMES

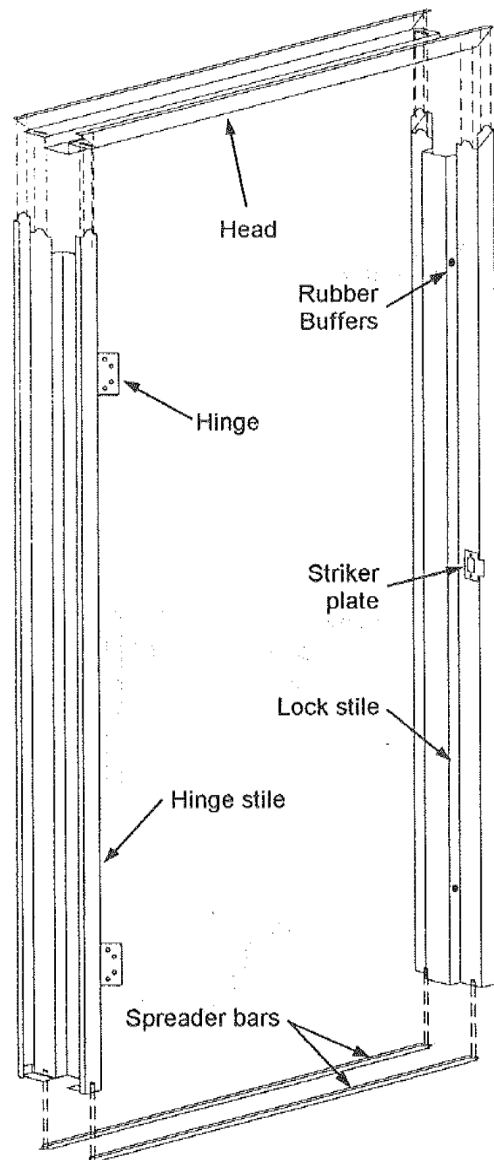
Knock down frames are supplied unassembled for ease of transportation. Individual wrapping (as shown) is optional.



Frame parts slot together neatly.



Once slotted into place, knock lugs down to secure frame, forming a mechanical joint.



METAL DOOR FRAMES

STANDARD DOOR FRAMES FOR DRY WALLS

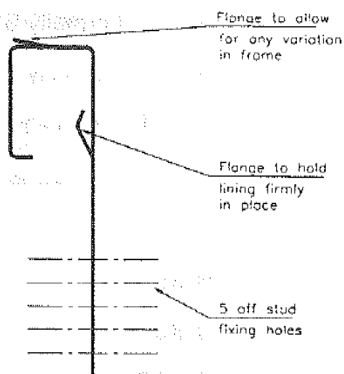
MASONRY FRAME WITH STUD CLIP FIXING

This is a method of fixing standard roll formed masonry frames into dry wall applications.

Suitable for use only in non-rated plasterboard partition walls.

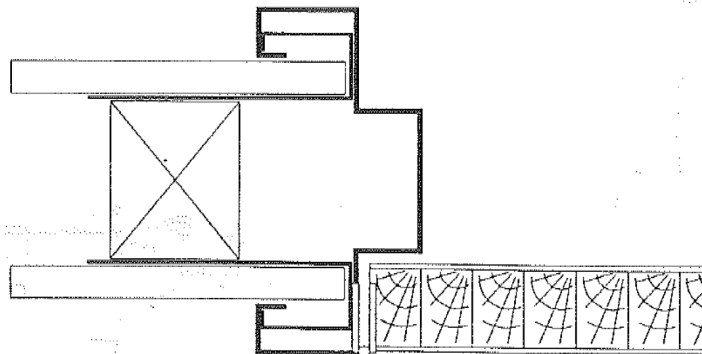
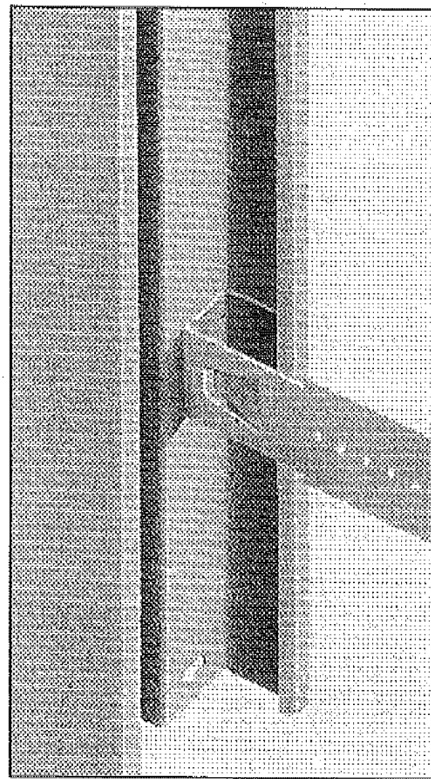
Steel or timber studs may be used.

Frame throat size should be the same as the overall width of wall



Stud clips are available to suit linings of 16mm, 13mm, 10mm and 6mm linings.

Other thicknesses available on request.



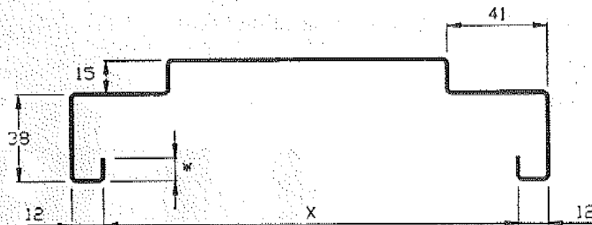
7

METAL DOOR FRAMES

STANDARD NON-RATED DOOR FRAMES

DESCRIPTION

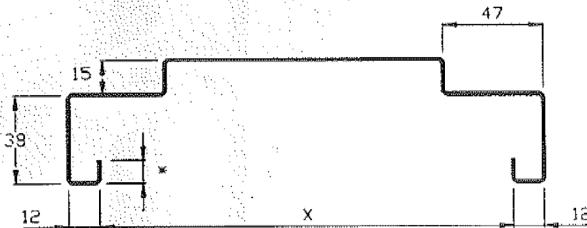
FRAME CODE
(STANDARD SIZES)
B (X)mm



1.1mm zincanneal steel.
Rebate to suit doors 35mm thick.
Throat dimension 'X' is variable to suit wall thickness.
2 light duty loose pin zinc plated hinges.
1 universal striker.

- * B 86 Formally BDR 4
- B 93 Formally BL 4
- B 102
- B 114
- B 123 Formally B1
- B 145 Formally B8
- * B 194 Formally B10

* = Does not apply



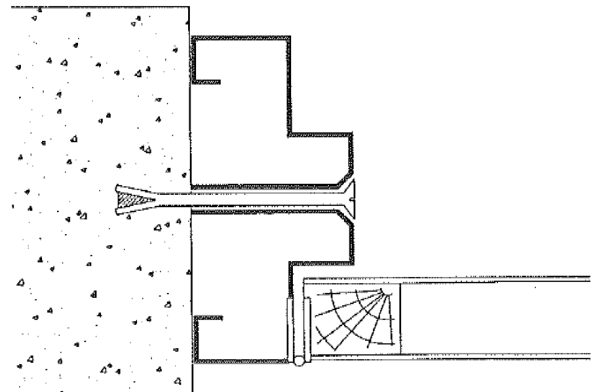
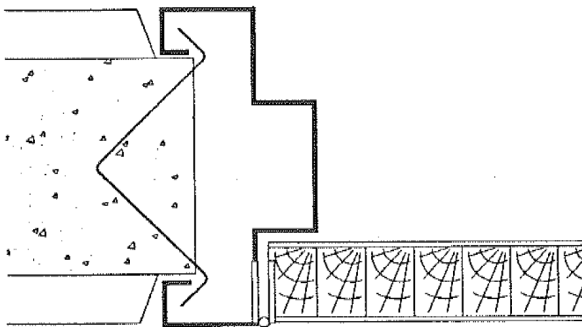
1.1mm zincanneal steel.
Rebate to suit doors 40mm thick.
Throat dimension 'X' is variable to suit wall thickness.
2 light duty loose pin zinc plated hinges.
1 universal striker.

- * B 86 A
- * B 93 A
- * B 102 A
- B 114 A
- B 123 A
- B 145 A Formally B8A
- * B 194 A

* = Does not apply

Brick & Block Work Walls

Concrete Walls & Retrofit Installation

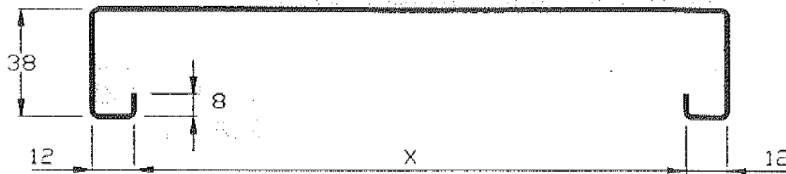


METAL DOOR FRAMES

SLIDING DOOR FRAMES

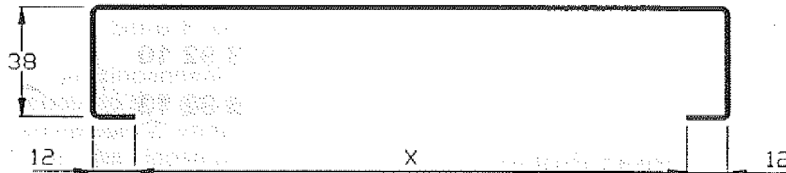
DESCRIPTION

FRAME CODE
(STANDARD SIZES)
SD (X)mm



SD 114

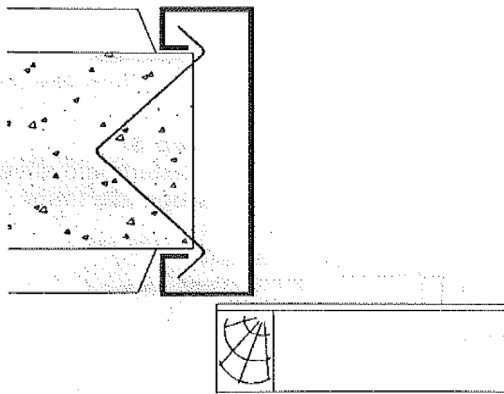
1.1mm zincaneal steel.
Throat dimension 'X' is variable to suit wall thickness.



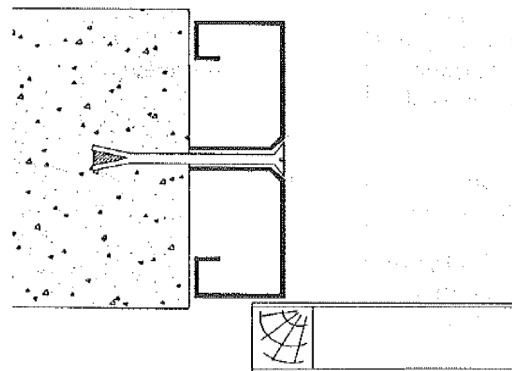
SD 93 Formally B7

1.1mm zincaneal steel.
Throat dimension 'X' is variable to suit wall thickness.

Brick & Block Work Walls



Concrete Walls & Retrofit Installation



METAL DOOR FRAMES

NEW GENERATION DOOR FRAMES

- INTERIOR -

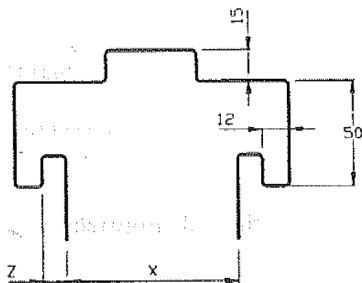
Suitable for stud wall applications

A unique designed frame for fast installation offering superior strength and clean finishing. (Patent pending).

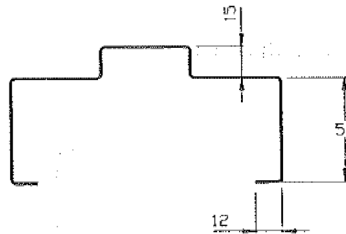
DESCRIPTION

FRAME CODE
(STANDARD SIZES)
B (X Z)mm

Interior door frames



Stile Profile



Head Profile

B 76 10

B 76 13

B 92 10

B 92 13

- 1.1mm zincanneal steel.
- Rebate to suit doors 35mm thick.
- Throat dimension 'X' is variable to suit wall thickness.
- Dimension 'Z' variable to suit plasterboard thickness.
- 2 light duty loose pin zinc plated hinges.
- 1 universal striker.

THREE STEPS TO EASY FITTING

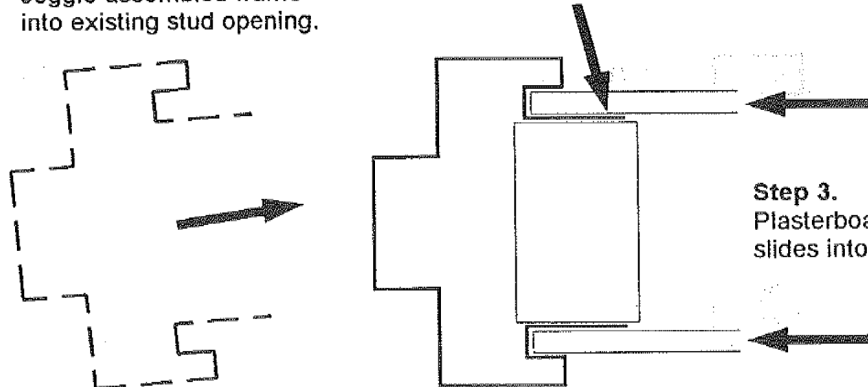
Step 1.
Joggle assembled frame into existing stud opening.

Step 2.
Fix leg of frame to studwork.

Step 3.
Plasterboard sheet slides into frame.

Allow for stud opening size, add 90mm to door height and width eg;

2040mm x 820mm door
= stud opening of 2130mm x 910mm



METAL DOOR FRAMES

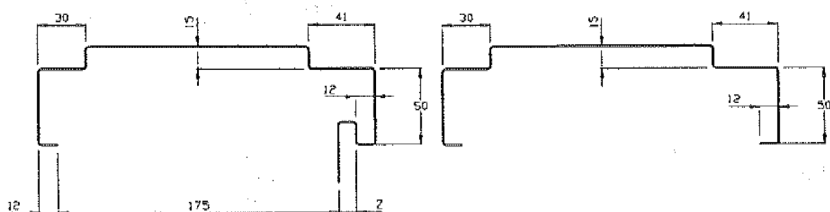
NEW GENERATION DOOR FRAMES - EXTERIOR -

Suitable for brick veneer applications

A unique designed frame for fast installation offering superior strength and clean finishing. (Patent pending).

DESCRIPTION

FRAME CODE (STANDARD SIZES)



Stile Profile

Head Profile

B (28 Z)mm

B 28 10

B 28 13

The throat size may be changed to suit customers requirements provided it complies with the BCA

- 1.1mm zincanneal steel.
- Rebate to suit doors 35mm thick.
- Dimension 'Z' variable to suit plasterboard thickness.
- 2 light duty loose pin zinc plated hinges.
- 1 universal striker.

FOUR STEPS TO HIGHER SECURITY

Allow for stud opening size, add 90mm to door height and width eg;

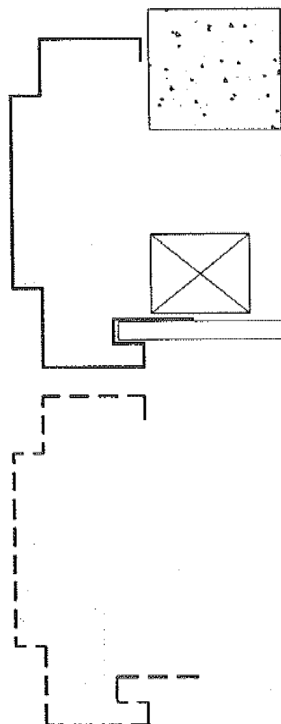
2040mm x 820mm door
= stud opening of 2130mm x 910mm

Step 2. Fix leg of frame to studwork.

Step 1. Push assembled frame up against studwork.

Step 3. Build brickwork after fixing frame to stud.

Step 4. Plaster board sheet slides into recess in the frame.



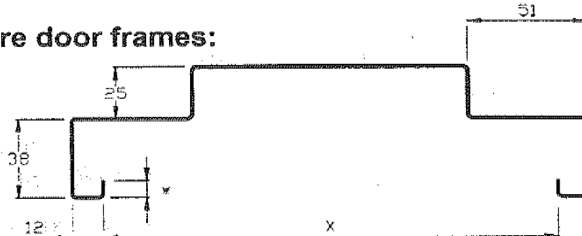
METAL DOOR FRAMES

FIRE DOOR FRAMES FOR MASONRY

DESCRIPTION

FRAME CODE
(STANDARD SIZES)
FR (X)mm

Maxi fire door frames:



FR 114 Formally FR 117

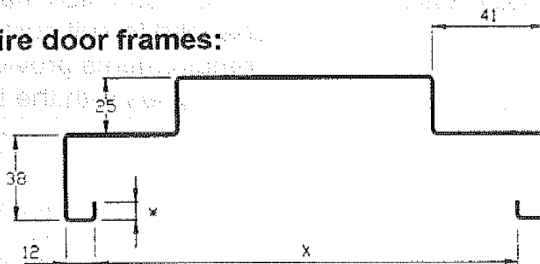
FR 145

* FR 193

1.4mm zincanneal steel.
All frames fire tested up to four hours.
Rebate to suit maxi fire doors 45mm thick.
Throat dimension 'X' is variable to suit wall thickness.
2 heavy duty loose pin zinc plated hinges.
1 universal striker.

* = Does not apply

Mini fire door frames:



FR 93 A Formally FR 98A

FR 114 A Formally FR 117A

FR 145 A

* FR 193 A

1.1mm zincanneal steel.
All frames fire tested up to two hours.
Rebate to suit mini fire doors 35mm thick.
Throat dimension 'X' is variable to suit wall thickness.
2 heavy duty loose pin zinc plated hinges.
1 universal striker.

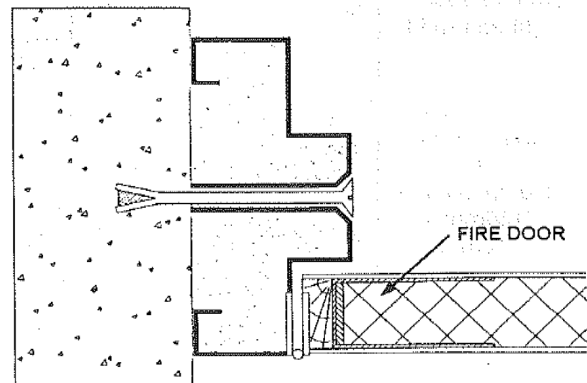
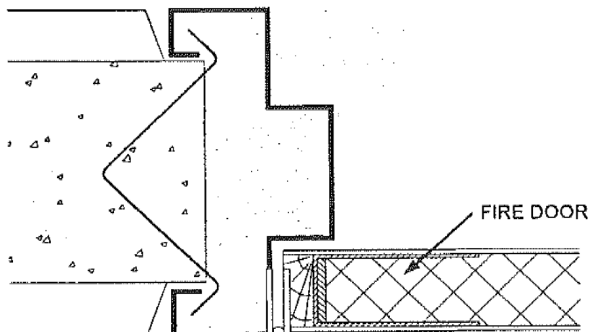
* = Does not apply

Brick & Block Work Walls

Frames must be grouted solid for fire ratings of over one hour.

Concrete Walls & Retrofit Installations

Frames must be grouted solid for all fire ratings.

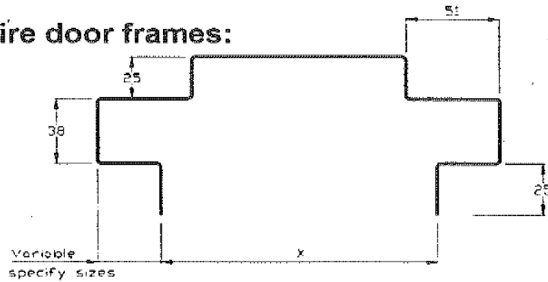


METAL DOOR FRAMES

FIRE DOOR FRAMES FOR DRY WALL - PARTITION FRAMES -

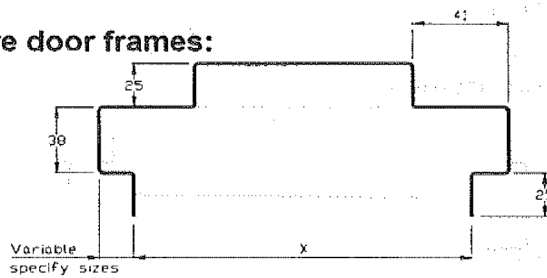
DESCRIPTION

Maxi fire door frames:



1.4mm zincanneal steel.
 All frames fire tested up to three hours.
 Rebate to suit maxi fire doors 45mm thick.
 Throat dimension 'X' is variable to suit wall thickness.
 2 heavy duty loose pin zinc plated hinges.
 1 universal striker.

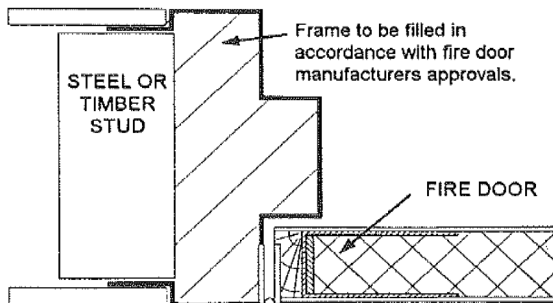
Mini fire door frames:



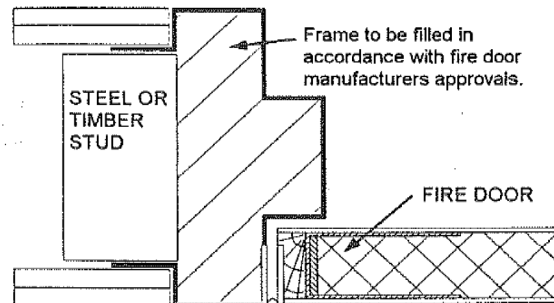
1.1mm zincanneal steel.
 All frames tested up to two hours.
 Rebate to suit mini fire doors 35mm thick.
 Throat dimension 'X' is variable to suit wall thickness.
 2 heavy duty loose pin zinc plated hinges.
 1 universal striker.

INSTALLATION:

One hour partition



Two and three hour partitions



METAL DOOR FRAMES

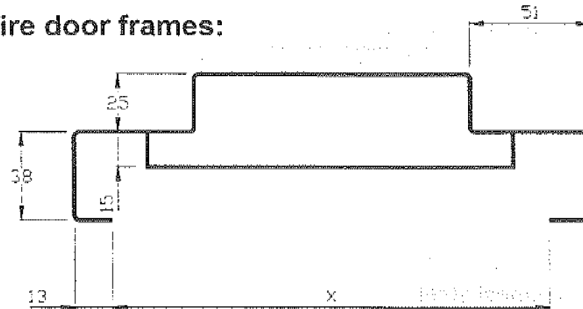
FIRE DOOR FRAMES FOR DRY WALL

One Hour Partitions

Masonry frame with Fast Fix bracket.

DESCRIPTION

Maxi fire door frames:



1.4mm zincanneal steel.

All frames fire tested for one hour.

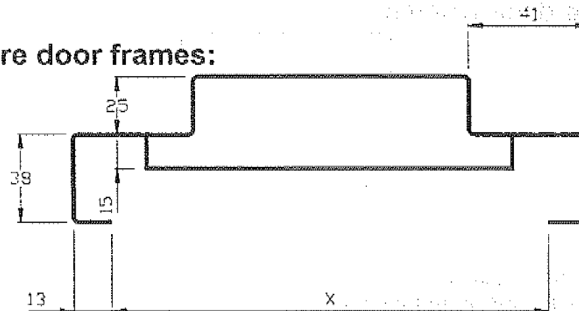
Rebate to suit maxi fire doors 45mm thick.

Throat dimension 'X' is variable to suit wall thickness.

2 heavy duty loose pin zinc plated hinges.

1 universal striker.

Mini fire door frames:



1.1mm zincanneal steel.

All frames tested for one hour.

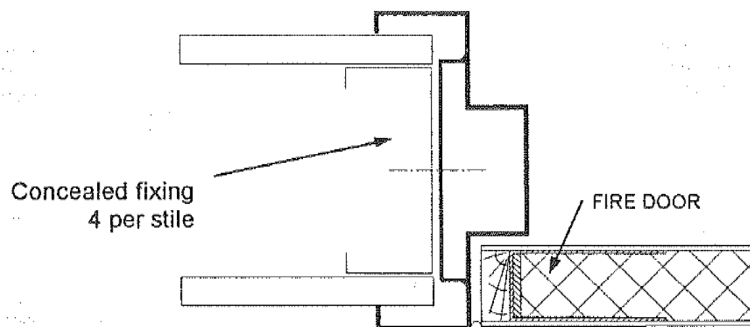
Rebate to suit mini fire doors 35mm thick.

Throat dimension 'X' is variable to suit wall thickness.

2 heavy duty loose pin zinc plated hinges.

1 universal sticker.

INSTALLATION:



METAL DOOR FRAMES

14

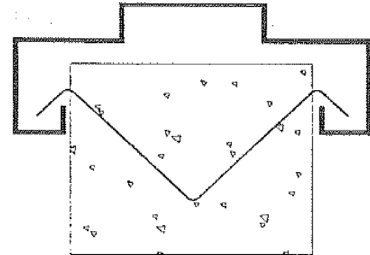
FRAME FIXING DETAILS FOR MASONRY WALLS

BRICK AND BLOCK WORK WALLS

Standard roll formed frame.

Suitable for use in non-rated, one, two, three and four hour brick and block work walls.

Frame must be back filled for all fire ratings.

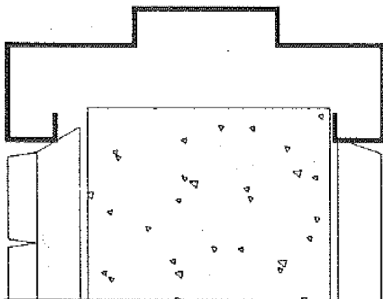
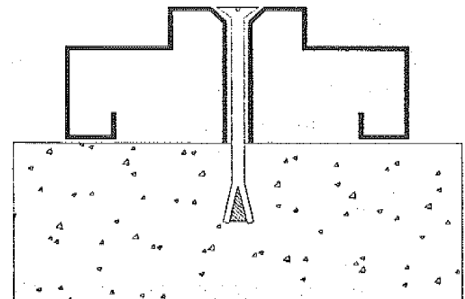


CONCRETE WALLS AND RETROFIT INSTALLATIONS

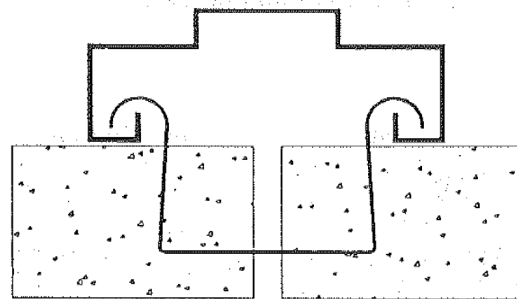
Standard roll formed frame.

Suitable for use in non-rated, one, two, three and four hour concrete and previously existing walls.

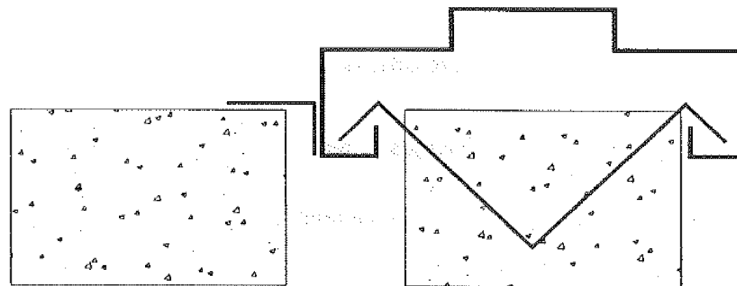
Frame must be back filled for all fire ratings.



Render and tile application for brick using B123 frame profile.



Double brick or block work



Cavity wall application using B146 profile with 30x19 weather mould.

METAL DOOR FRAMES

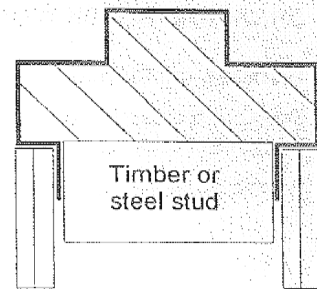
FRAME FIXING DETAILS FOR DRYWALLS

PARTITION DRY WALL FIRE DOOR FRAMES

This is the partition dry wall fire door frame, made by conventional brake press methodologies.

Suitable for use in one, two and three hour fire rated plasterboard partition walls.

Steel or timber studs may be used.

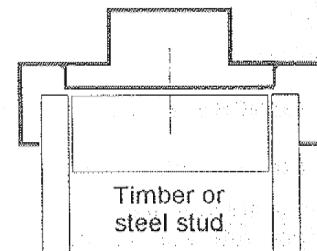


STANDARD FRAME WITH FAST FIX BRACKET

This is a new and innovative method for concealed or fixing standard roll formed masonry frames into dry wall applications.

Suitable for use in non-rated and one hour fire rated plasterboard partition walls.

Steel or timber studs may be used.

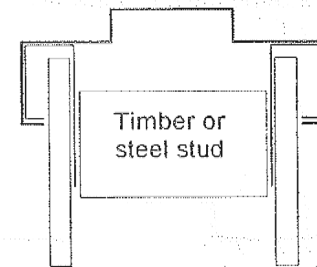


STANDARD FRAME WITH STUD CLIP FIXING

This is a new and innovative method of fixing standard roll formed masonry frames into dry wall applications.

Suitable for use only in non-rated partition walls.

Steel or timber studs may be used.

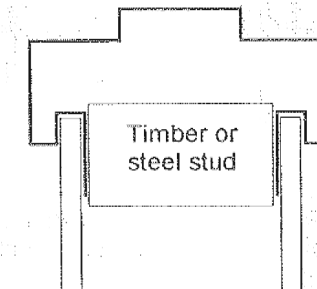


INTERIOR NEW GENERATION FRAMES

This new innovation allows plasterboard edges to be concealed within the door frame.

Suitable for use only in non-rated partition walls.

Steel or timber studs may be used.



EXTERIOR RESIDENTIAL FRAMES FOR USE WITH BRICK VENEERS

This new innovation allows plasterboard edges to be concealed within the door frame.

Suitable for use only in non-rated exterior brick veneer partition walls.

Steel or timber studs may be used.

